

ARUP



Daylight Amenity Impacts in the Growing City

Dr Phillip Greenup

Senior Lighting Designer, Arup

Daylight Symposium 9 October 2019

Welcome

Vienna – no. 1 most liveable city in the world

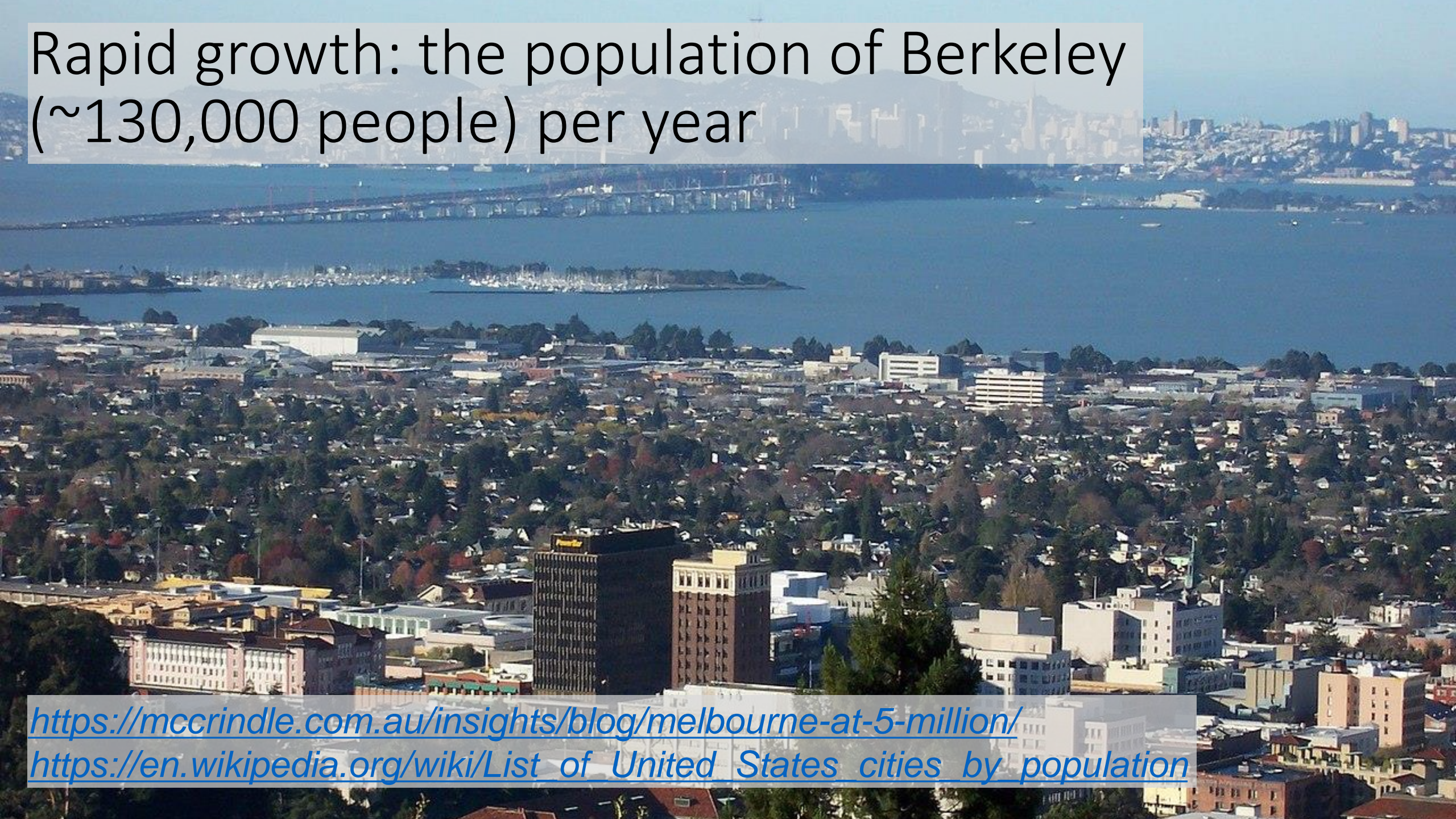


<https://www.economist.com/graphic-detail/2019/09/04/vienna-remains-the-worlds-most-liveable-city>

Melbourne – no. 2 most liveable city in the world



<https://www.economist.com/graphic-detail/2019/09/04/vienna-remains-the-worlds-most-liveable-city>



Rapid growth: the population of Berkeley
(~130,000 people) per year

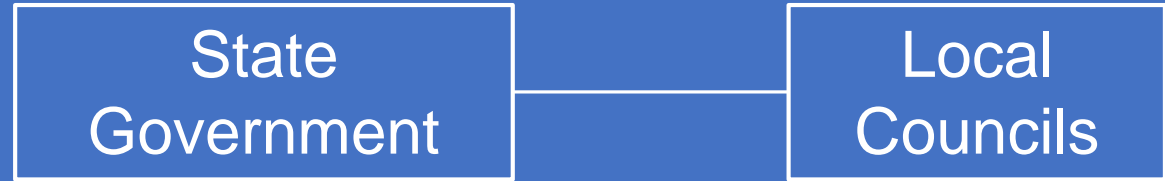
<https://mccrindle.com.au/insights/blog/melbourne-at-5-million/>
https://en.wikipedia.org/wiki/List_of_United_States_cities_by_population

How do we maintain daylight amenity and health benefits of daylight as the city densifies?



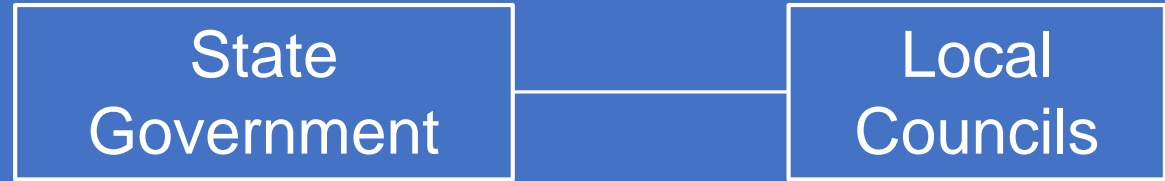
Planning policies
and
implementation:

State and local
government
authorities



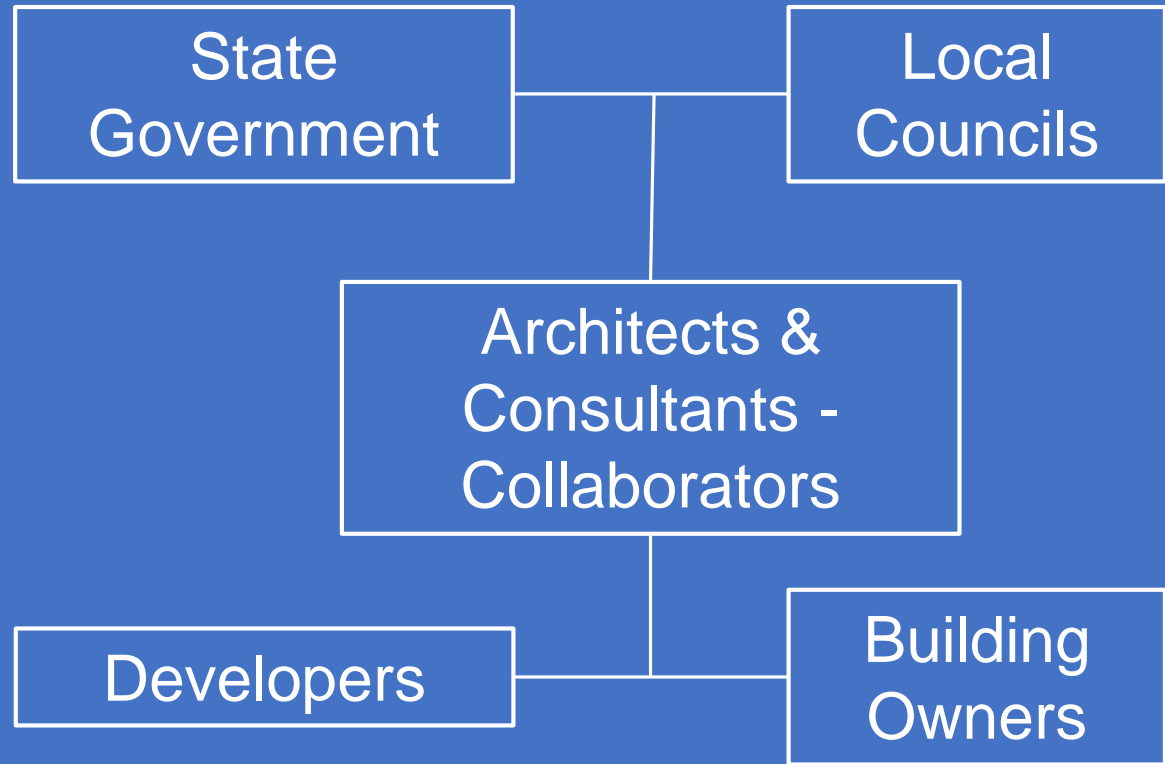
Development,
design and
commercial
responses, risk
management:

Owners and
developers



Advisers and
collaborators:

Architects,
designers and
consultants



Daylight amenity in dwellings



Policies and tools



Better Apartment Design Standards, April 2017

Victorian Planning Policy Framework clauses 55, 58:

- Daylight and sunlight access
- Building setbacks
- Building entries
- Room depth
- Windows

Better Apartments Design Standards

New apartment design standards for Victoria



Green Star

Credit 12.1 Daylight:
Daylight access performance benchmarks

<https://new.gbca.org.au/green-star/>

Green Star Design & As Built v1.2

Submission Guidelines



Built Environment Sustainability Scorecard (BESS)



Search...

[About](#) [Support & Training](#) [Tool notes](#) [Contact](#) [Register](#) [Sign in](#)

Tool notes

- Overview
- Management
- Water
- Energy
- Stormwater
- IEQ
- Transport
- Waste
- Urban Ecology
- Innovation



Management



Water



Energy



Stormwater



IEQ



Transport

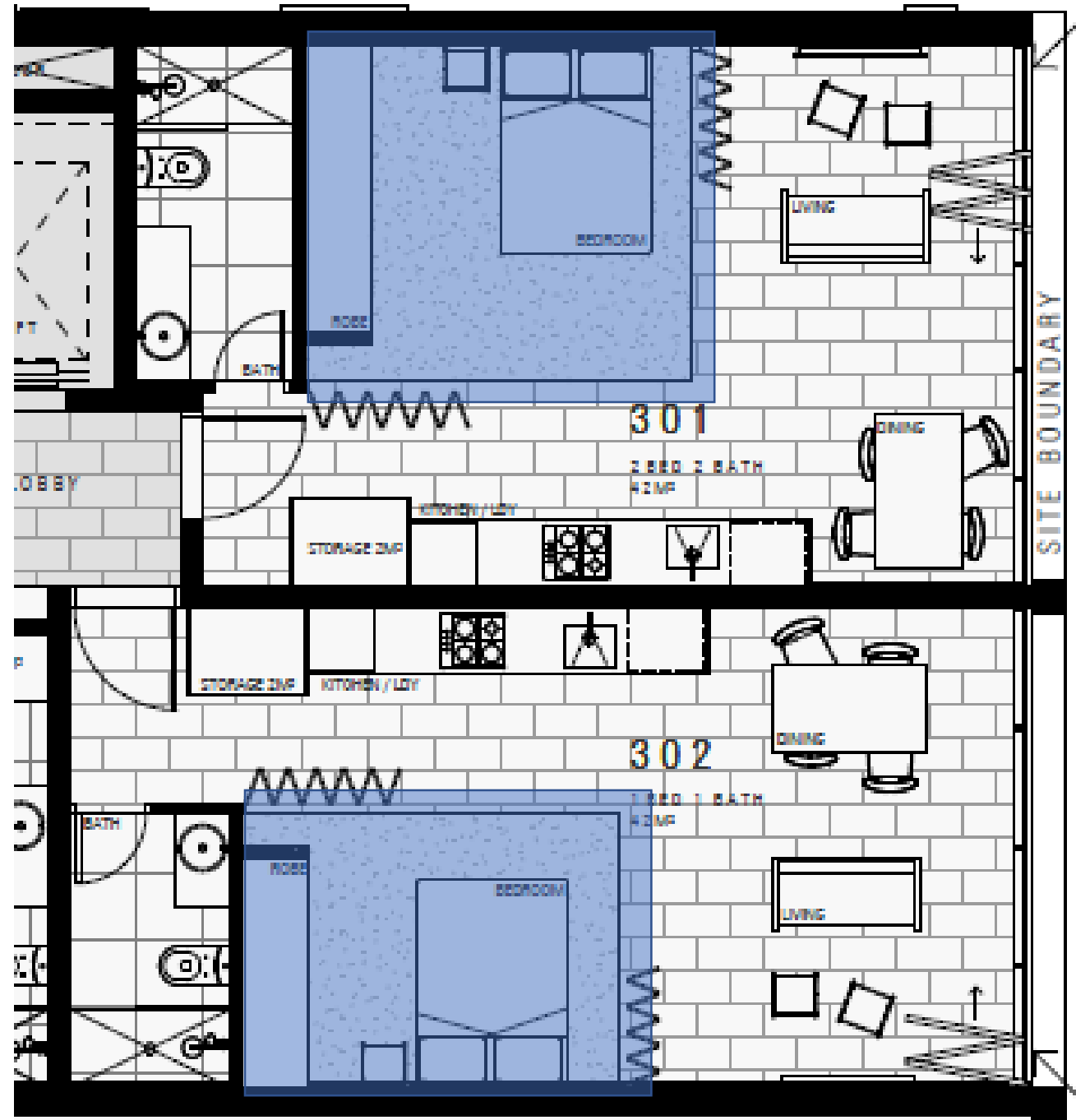


<https://bess.net.au/>

Impacts of new policies



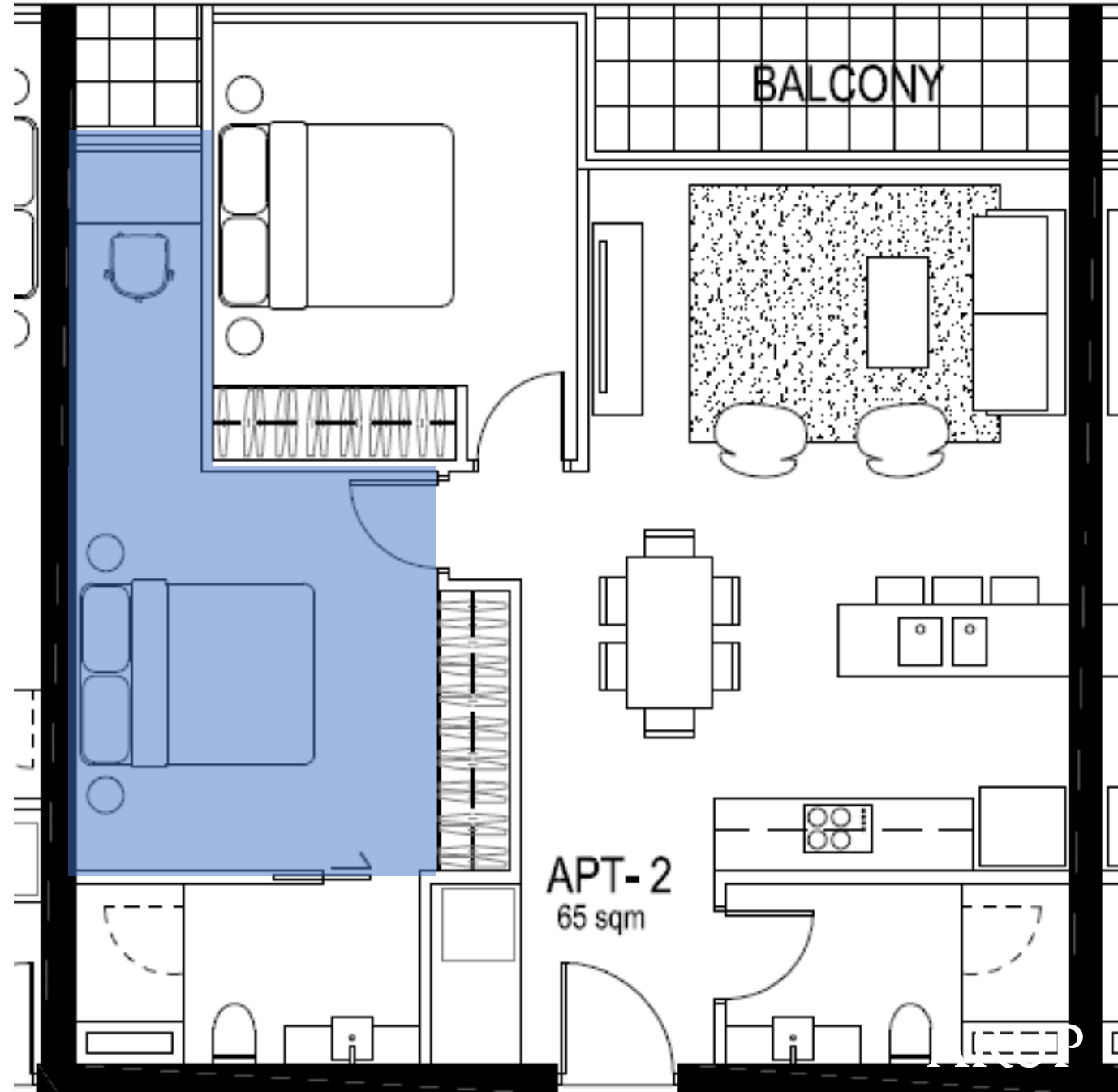
No more
'borrowed light'
bedrooms



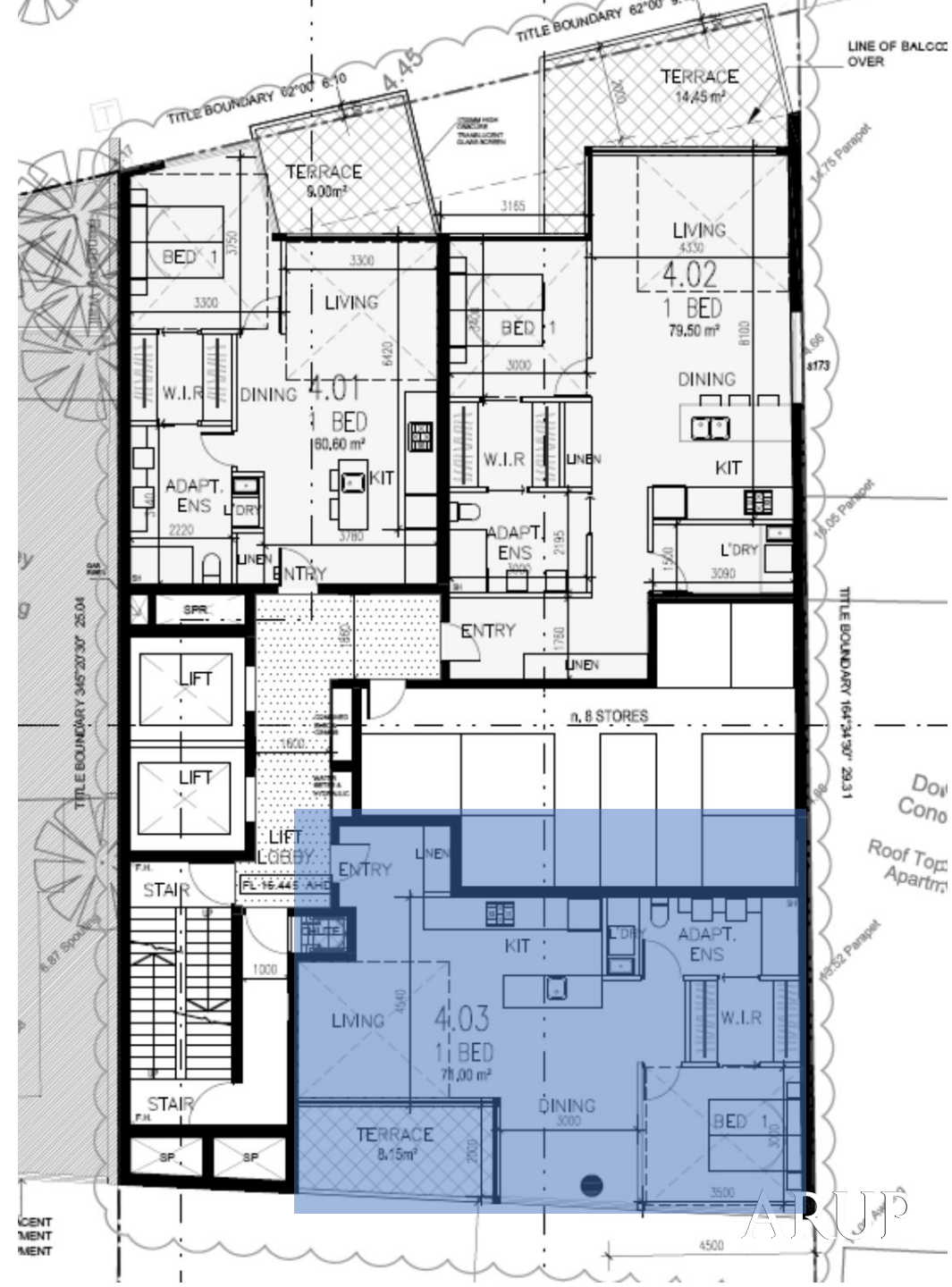
Light well dimensions
improved



Better control over
set-back bedrooms



Wider, shallower single-aspect south-facing spaces



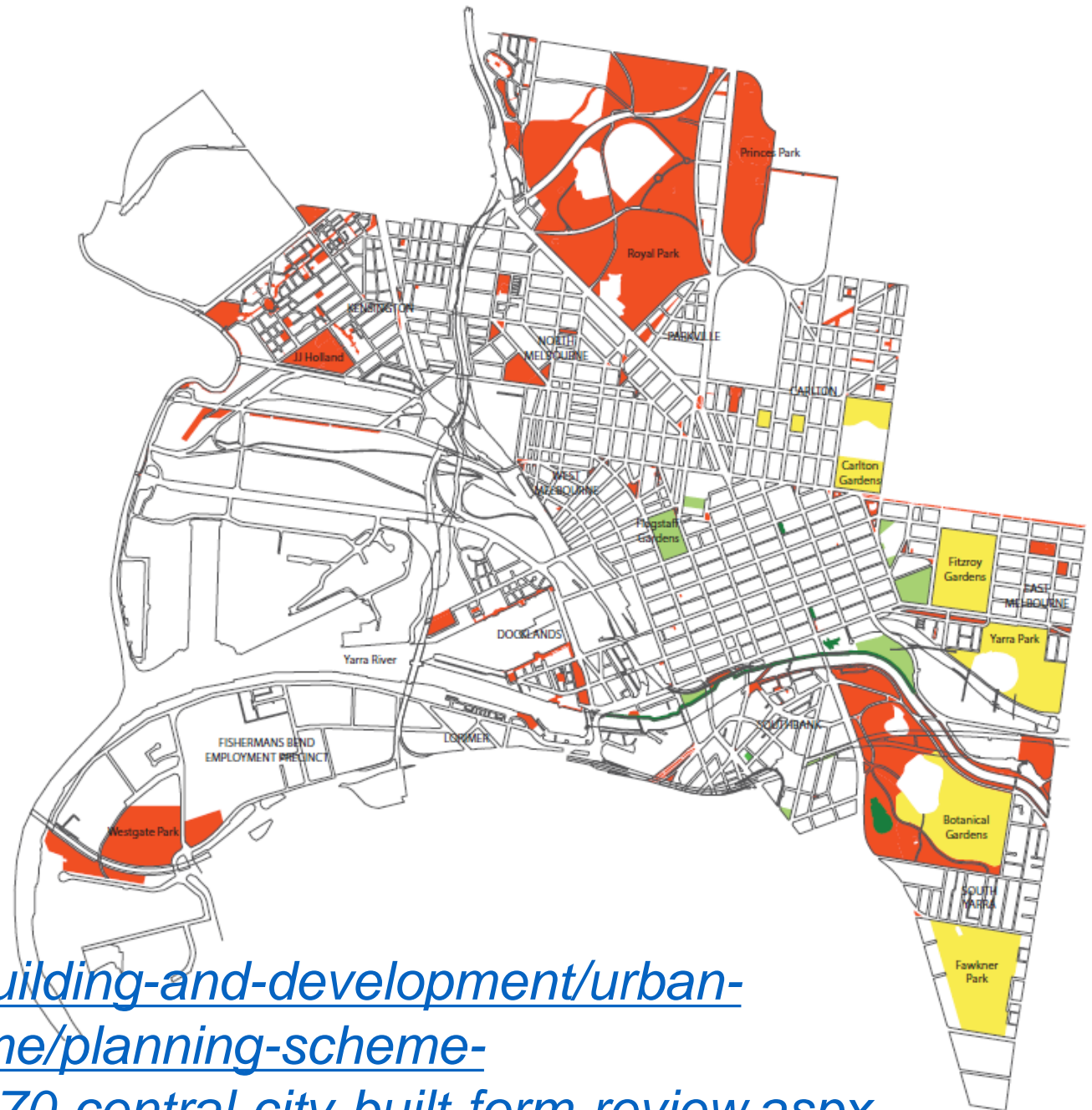
Daylight amenity in urban spaces



Policies and tools

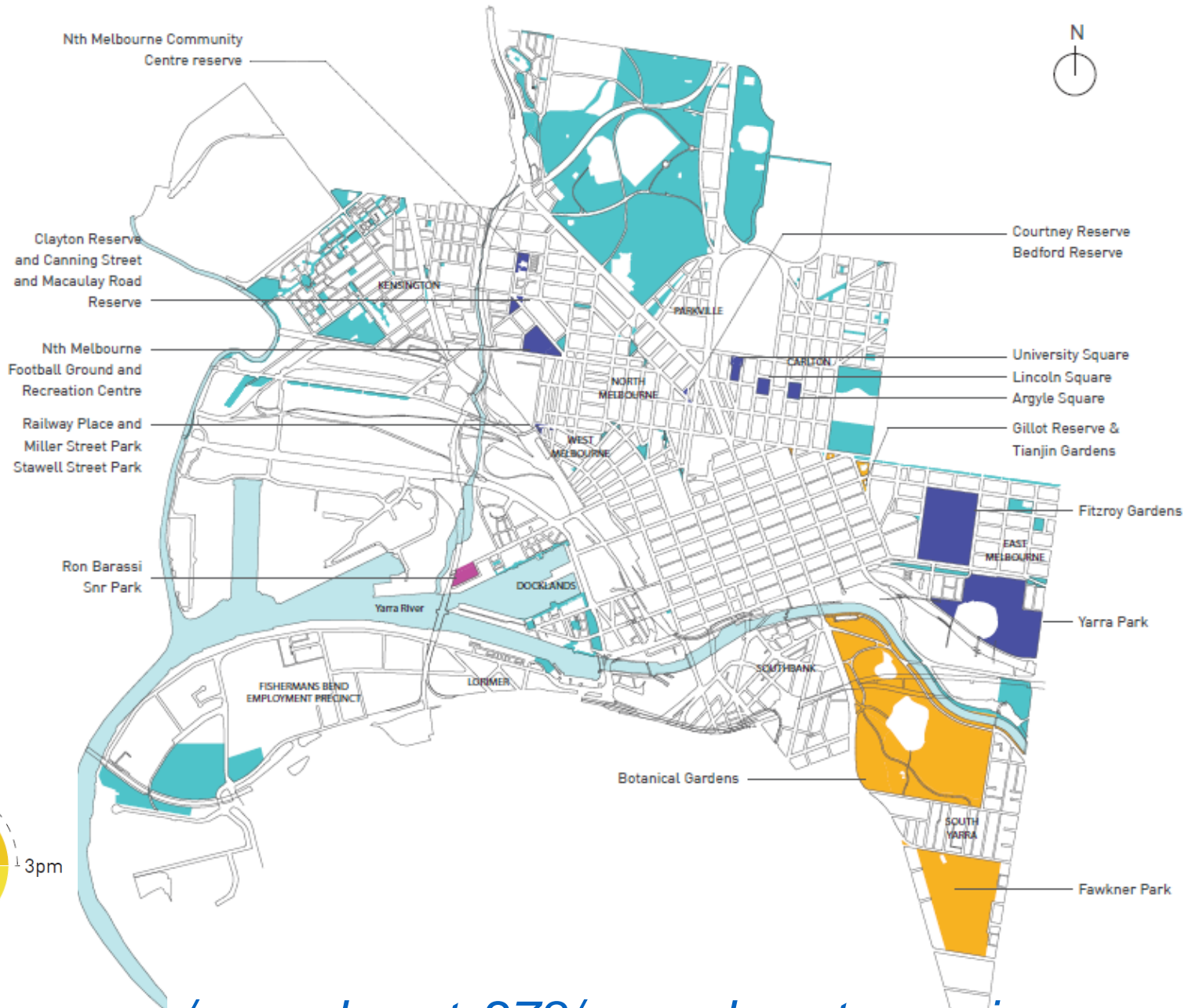
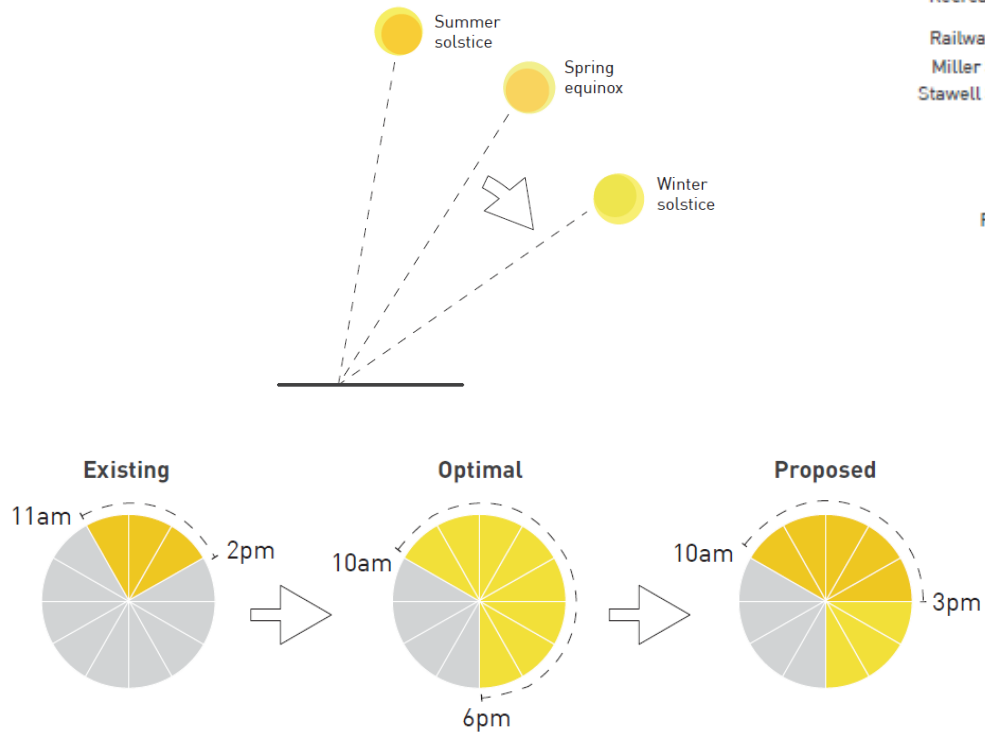


Sunlight protection, August 2017



<https://www.melbourne.vic.gov.au/building-and-development/urban-planning/melbourne-planning-scheme/planning-scheme-amendments/Pages/amendment-c270-central-city-built-form-review.aspx>

Expanded sunlight protection, currently proposed



<https://participate.melbourne.vic.gov.au/amendmentc278/amendment-overview>

Impacts of new policies



Melbourne Quarter Tower



<https://participate.melbourne.vic.gov.au/amendmentc278/amendment-overview>

Melbourne Quarter Tower



<https://www.melbournequarter.com/work/melbourne-quarter-tower/>

Summary



Melbourne – no. 2 most liveable city in the world

A photograph of the Melbourne skyline at dusk. The sky is a deep blue, and the city lights are beginning to glow. In the foreground, a bridge with multiple arches spans across a body of water, with its lights reflecting on the surface. The background is filled with various skyscrapers and buildings, some with their windows lit up.

How to maintain Melbourne as a highly liveable city?

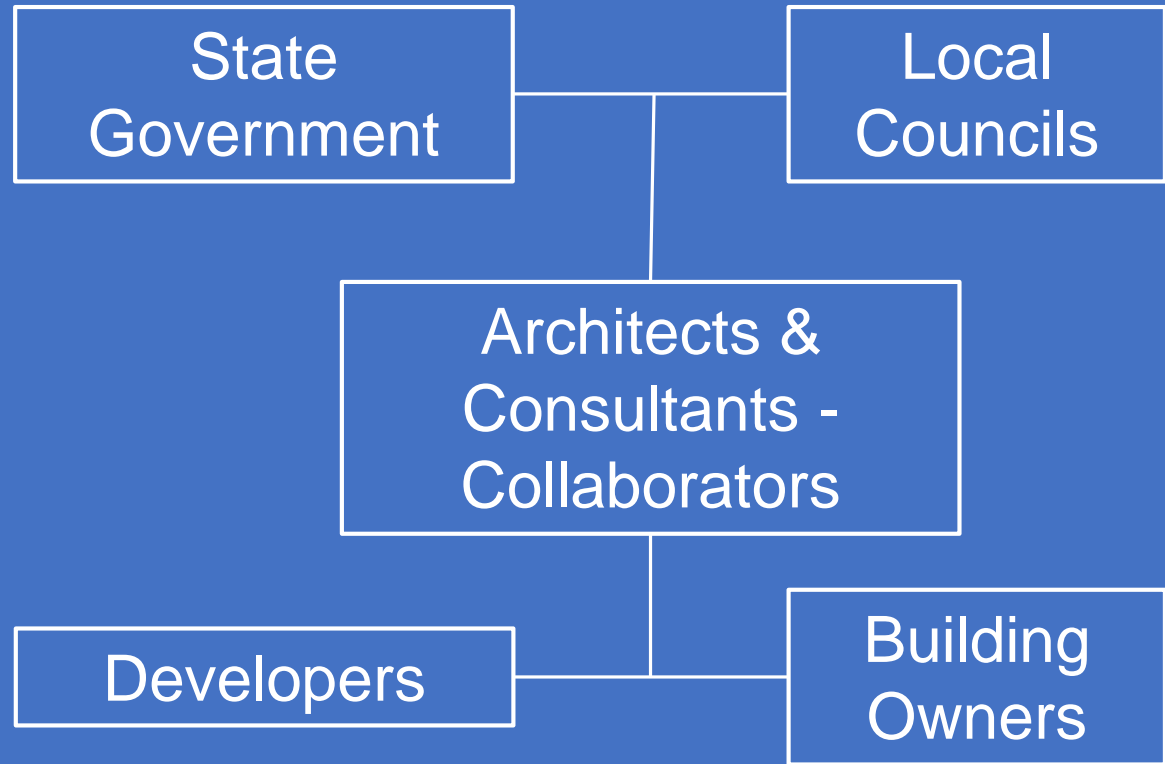
Growth is needed as the population grows rapidly

There will be impacts on daylight amenity

Amenity impacts must be appropriately considered, planned and controlled

Collaboration is key

Consultants
working with policy
makers, local and
state government
agencies,
developers and
architects



Thank you!

Dr Phillip Greenup

arup.com

